



General Features

- ◆ Sealed and maintenance free operation.
- ◆ Non-spillable construction design.
- ◆ ABS containers and covers (UL94HB UL94V-0) optional.
- ◆ Safety valve installation for explosion proof.
- ◆ High quality and high reliability.
- ◆ Exceptional deep discharge recovery performance.
- ◆ Low self discharge characteristic.
- ◆ Flexibility design for multiple install positions.



Battery Type	Valve-Regulated, Absorbed Glass Mat (AGM) Technology			
Nominal Voltage	12V			
Capacity (20°C)	20HR (1.44A, 1.8V/cell)	10HR (2.72A, 1.80V)	5HR (4.66A, 1.75V)	1HR (16.4A, 1.60V)
	28.8AH	2.72AH	23.3AH	16.4AH
Dimensions	Length	Width	Height	Total Height
	165mm (6.50 inches)	125mm (4.92 inches)	175mm (6.89 inches)	175mm (6.89 inches)
Approx Weight	Approx 9.5 kg (20.9 lbs)			
Internal Resistance	Full Charged at 20°C: Approx 12 mΩ			
Self Discharge	3% of capacity declined per month at 20°C			
Capacity affected by Temperature (10HR)	40°C	25°C	0°C	-15°C
	103%	100%	86%	65%
Charging Voltage (V)	Cycle use		Float use	
	14.4V~15.0V at 20°C. Temp. Coefficient -30mV/°C		13.5V~13.8V at 20°C. Temp. Coefficient (-20mV/°C)	
Current	Max. Discharge Current		Initial Charging Current	
	420A		Less than 8.4A	
Operating Temp. Range	Discharge		Charging	
	-15~50°C (5~122°F)		0~40°C (32~104°F)	
			Storage	
			-15~40°C (5~104°F)	

Constant Current Discharge (Amperes) at 20°C (68°F)

F.V/Time	10min	15min	20min	30min	45min	1h	2h	3h	4h	5h	6h	8h	10h	20h
1.85V/cell	343	286	244	199	151	126	8.15	6.46	5.23	4.23	3.75	3.00	2.56	1.43
1.80V/cell	438	346	288	235	175	142	8.90	6.95	5.59	4.54	4.03	3.19	2.72	1.44
1.75V/cell	482	378	310	244	182	148	9.23	7.08	5.73	4.66	4.13	3.24	2.74	1.45
1.70V/cell	525	403	326	254	189	153	9.59	7.28	5.87	4.78	4.22	3.29	2.77	1.48
1.65V/cell	567	429	346	268	194	158	9.86	7.59	6.07	4.91	4.31	3.34	2.83	1.50
1.60V/cell	615	459	369	283	202	164	10.2	7.82	6.26	5.08	4.41	3.37	2.86	1.51

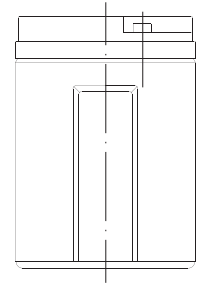
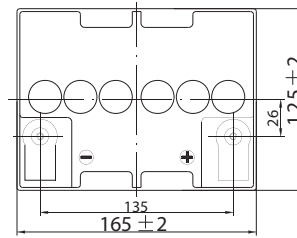
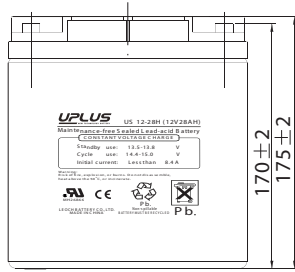
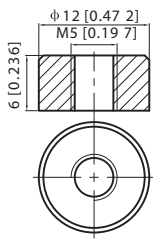
Constant Power Discharge (Watts) at 20°C (68°F)

F.V/Time	10min	15min	20min	30min	45min	1h	2h	3h	4h	5h	6h	8h	10h	20h
1.85V/cell	646	544	469	387	295	248	16.1	12.8	10.4	8.44	7.51	6.03	5.16	2.87
1.80V/cell	816	649	546	450	341	277	17.5	13.7	11.1	9.02	8.02	6.38	5.46	2.90
1.75V/cell	882	700	582	463	350	288	18.1	13.9	11.3	9.23	8.21	6.48	5.51	2.92
1.70V/cell	940	737	607	479	363	296	18.7	14.3	11.6	9.45	8.37	6.56	5.56	2.97
1.65V/cell	1005	778	640	502	369	304	19.1	14.8	11.9	9.68	8.53	6.65	5.67	3.01
1.60V/cell	1067	819	674	526	382	313	19.7	15.2	12.2	9.97	8.69	6.70	5.72	3.02

Dimensions

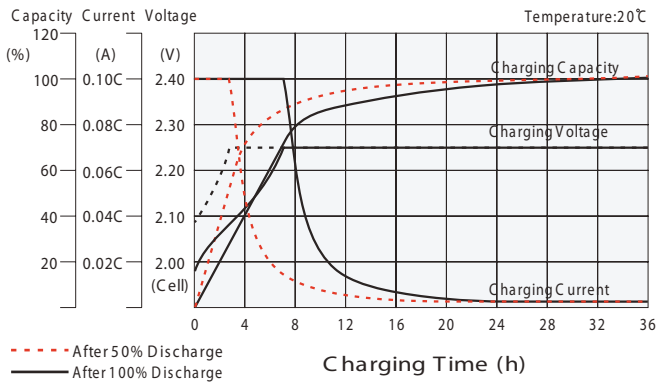
T1 2 Terminal

Unit: mm [inches]

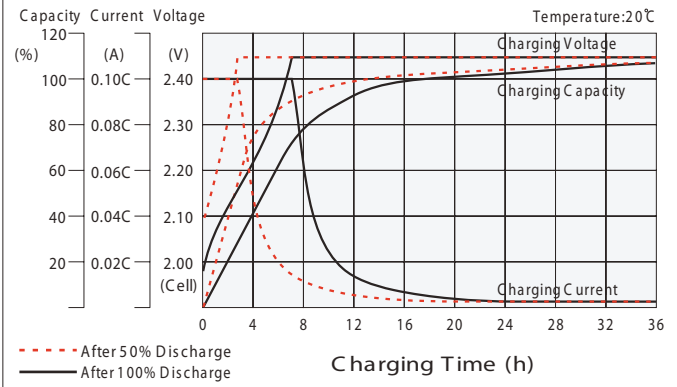


Torque: 2.0~3.0N*M

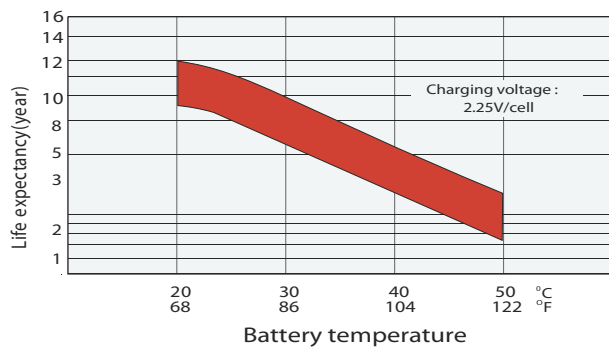
Float charging characteristics



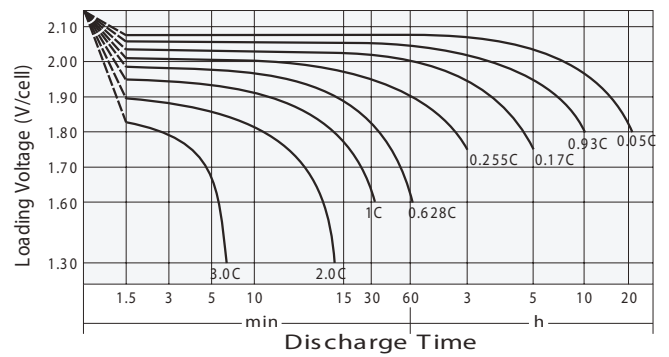
Cycle use charging characteristics



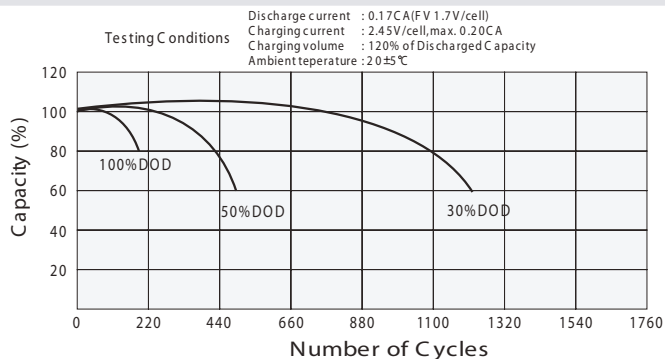
Effect of Temperature on Long Term Float Life



Discharge characteristics



Cycle Life in Relation to Depth of Discharge



Self Discharge Characteristics

